

Hart District Council in Partnership

Restores Fleet Pond

Working together to restore Fleet Pond



The Dredging has been generously funded by Natural England's HLS Grant, Natural England's Water Framework Directive, Environment Agencies WFD and the continued funding from Hart District Council over the past 10 years.

This is a long-term project carried out by Hart District Council in partnership with the Fleet Pond Society, Natural England & the Environment Agency.

Over the years, the ecological and physical condition of Fleet Pond has declined due to the build up of silt in the lake brought in from the Gelvert and Brookly Streams, the presence of turbid waters and nutrient inputs from urban runoff and wildfowl. The build up of silt is causing key habitats to deteriorate and the lake is now in an unfavourable and declining status. The Fleet Pond Restoration Project aims to improve the water quality, recreate lost habitat, boost biodiversity.

Gelvert stream diversion

A new channel has been created on the Gelvert Stream. This channel will have a sluice gate that can be operated to allow some high flow on the Gelvert to take this alternative route to reach Fleet Pond. The new diversion creates a larger channel for water to slow down and allow the sediment to drop out before it reaches the pond.

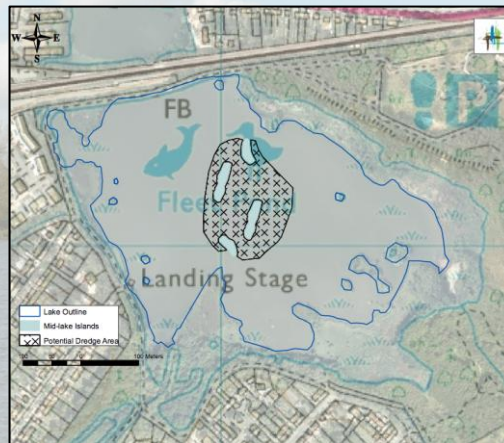


Dredging

Fleet Pond is slowly silting up. To improve the Pond's water quality and enhance the wildlife habitats, we must deepen the lake. Dredging work starts at the end of February 2012. The dredged lake sediment will be re-used to create islands around the lake shore. The new island habitat will provide new reedbeds for birds, fish, and insects.

Mid-Lake Dredging

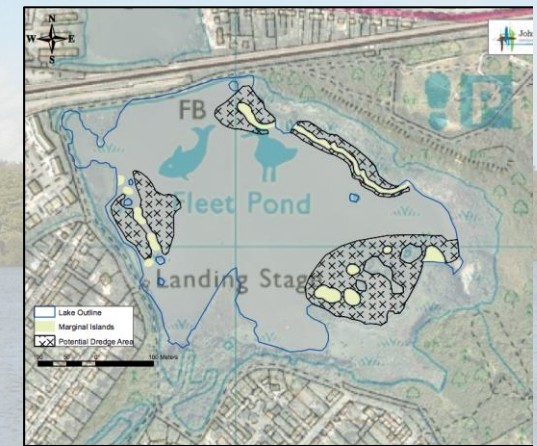
In Spring 2012, the centre of the lake will be deepened by the diggers. The lake bed sediment will be placed into central islands. Wind across the Pond moves the sediment around, which lowers the water quality and causes the water to look murky. These central islands will create a windbreak, to reduce the wave action across the lake, which will reduce the turbidity in the water.



Marginal dredging

Further dredging in Summer 2012 will see more deepening of the shallow marginal areas of the lake and island creation. The marginal islands will create calmer backwaters, improving and increasing the diversity of habitats available within the pond.

Gaps will be left between the islands to enable water to flow freely, to provide wildlife habitats and rowing boat access. The islands will provide sheltered marginal areas which will give positive benefits for a range of valued species, including the recovery of the lake's plant and insect life for which it was renowned.



Looking to the Future

Into 2013 there will be more dredging of the lake including land based disposal of sediment to a receptor site. There will also be associated with enhancements of terrestrial habitats around Brookly Stream. We are working hard to secure further funding to continue the enhancement of the lake into the future.

For more information see our Hart Countryside Blog www.hartranger.blogspot.com or contact us on 01252 623443 or email countryside@hart.gov.uk
Fleet Pond Society 'Clearwater Campaign' raises awareness of the situation at Fleet Pond and fundraises towards the future. www.fleetpondsociety.co.uk

